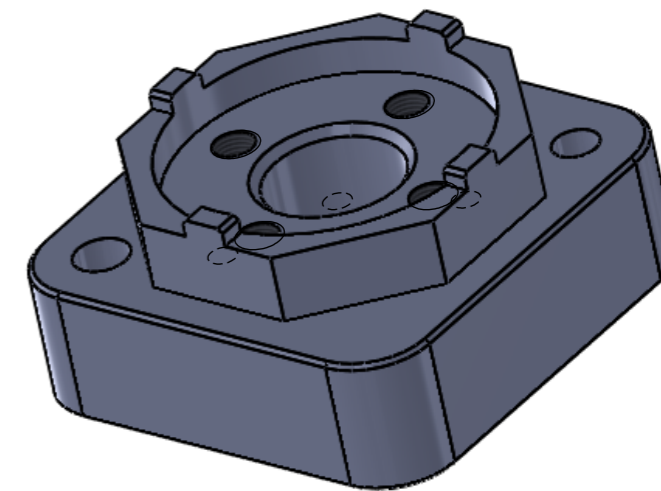
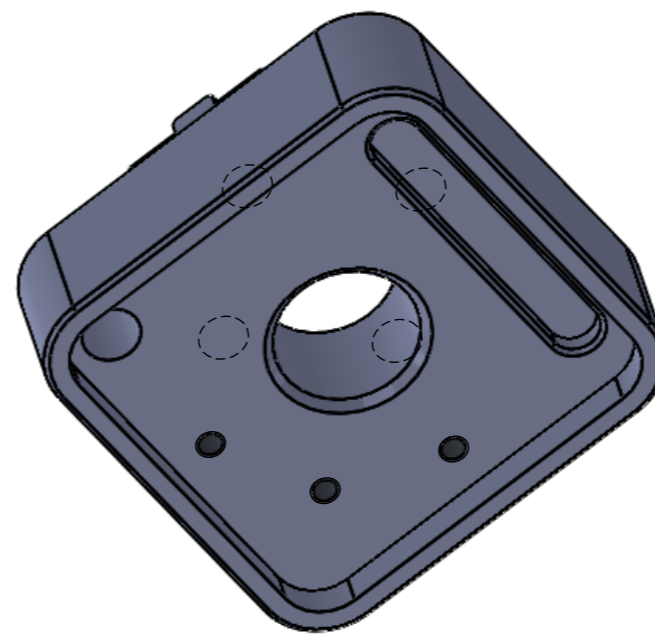
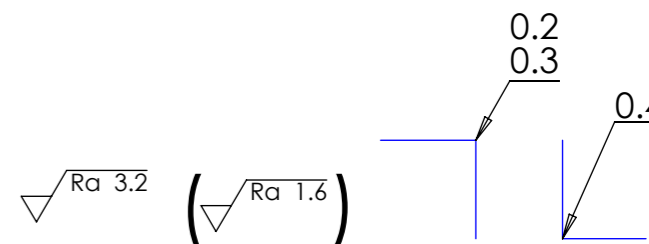


3 off Ø 5.00 - 15.00  
M6x1 - 6H 12.00  
on 70 pcd



Drill depths will not be assessed  
Deburr all edges by machine where possible ,  
finish with hand chamfer



DEBUR AND BREAK SHARP EDGES	
NAME	DATE
DRAWN Ian Thompson	
UNLESS OTHERWISE SPECIFIED: DIMENSIONS ARE IN MILLIMETERS TOLERANCES: LINEAR: ±0.1mm ANGULAR: ±0.5°	
MATERIAL: Aluminium	

TITLE: <b>Worldskills UK CNC Milling Passive Heat 2012</b>		
DWG NO. WSCUKPH - 2012	FINISH: As Machined	A3
SCALE:1:1	DO NOT SCALE DRAWING	SHEET 1 OF 1